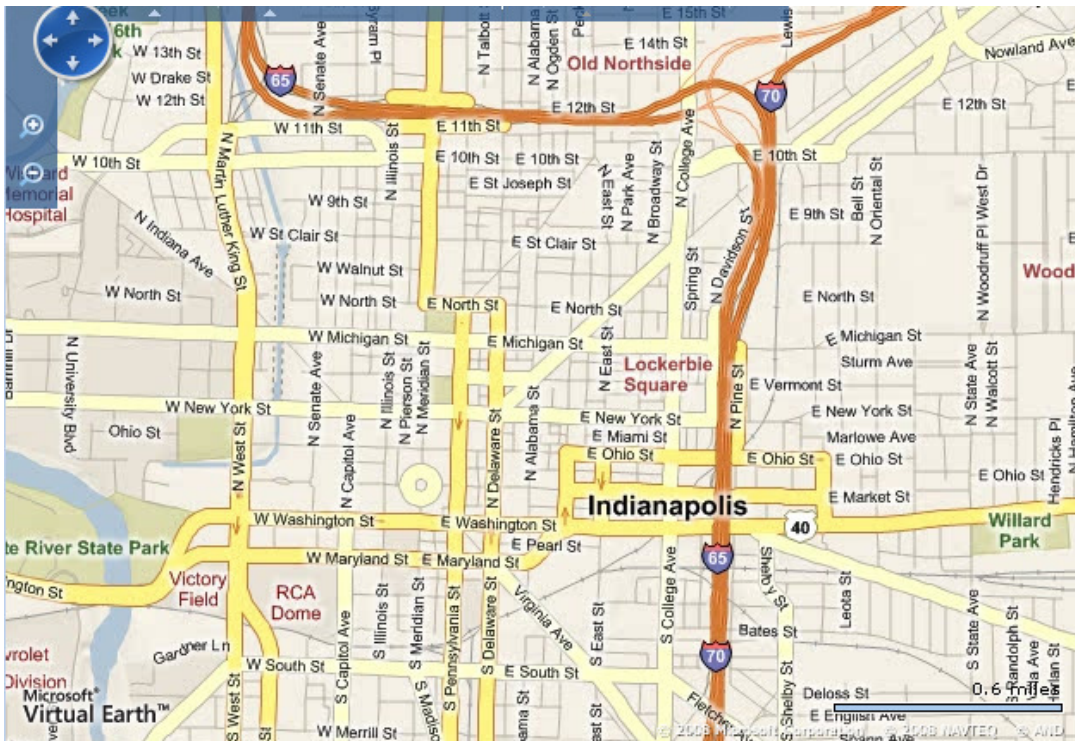


How to get to the ARC of Greater Indianapolis



Arriving from the northwest— Interstate 65

South to Meridian St., Exit 113. At third stoplight, turn right onto Pennsylvania St. Move to the left lane. After the first stoplight, turn left at the next block onto St. Joseph St. At third stop sign, continue straight to cross Ft. Wayne Ave. into the chapter parking lot.

Arriving from the north—Central St.

South to 10th St. and Ft. Wayne Ave. At stoplight, turn right onto Ft. Wayne Ave. Immediately move to the left lane. Turn left into the chapter parking lot.

Arriving from the northeast—10th St.

East to Fort Wayne Avenue. Move to the right lane as when approaching East St. Continue on 10th Street, going straight at the stoplight at East St. At the second stoplight, follow the lane to Ft. Wayne Ave. Turn left into chapter parking lot.

Arriving from the west—10th St.

East to Pennsylvania St., turn right. Quickly move to the left lane. Go one block, turn left onto St. Joseph St. At third stop sign, continue straight to cross Ft. Wayne Ave. into the parking lot.

Arriving from the west—New York St.

East to Delaware St., turn left. At third stoplight, turn right onto North St. At next stoplight, turn left onto Alabama St. At second stoplight, turn right onto Ft. Wayne Ave. Turn right into the chapter parking lot.

Arriving from the west—Maryland St.

East to Delaware St., turn left. At seventh stoplight, turn right onto North St. At next stoplight, turn left onto Alabama St. At second stoplight, turn right onto Ft. Wayne Ave. Turn right into the chapter parking lot.

Arriving from the west—Interstate 70

East to Market St., Exit 111. Turn left onto Market St. At first stoplight, turn right onto College Ave. At the fifth stoplight, turn left onto 10th St. Move to the right lane. At second stoplight, follow the lane to Ft. Wayne Ave. Turn left into chapter parking lot.

Arriving from the south—Delaware St.

North on Delaware to St Joseph St. Turn right on St Joe. Two blocks later, St Joe ends in our parking lot.

Arriving from the south—Interstate 65

North to Washington St Exit. Turn left on Washington St. Turn right on Delaware. North on Delaware to St Joseph St. Turn right on St Joe. Two blocks later, St Joe ends in our parking lot.

Arriving from the east—Michigan St.

East to College Ave. Turn right. At second stoplight, turn left onto 10th St. Move to the right lane. At second stoplight, follow the lane on Ft. Wayne Ave. Turn left into chapter parking lot.

Arriving from the east—Washington St.

East to College Ave. Turn right to College Ave. At sixth stoplight, turn left onto 10th St. Move to the right lane. Continue straight past the East St. intersection. Follow the lane to Ft. Wayne Ave. and turn left into chapter parking lot.

Arriving from the east—Interstate 70

East to Michigan and Ohio St., Exit 83A. When exit ramp reaches street level, turn right onto North St. Go one block to College Ave., turn right. At second stoplight, turn left onto 10th St. Move to the right lane. Continue straight past the East St. intersection. Follow the lane past the second stoplight onto Ft. Wayne Ave. and turn left into the chapter parking lot.